



# **FacadesThree WaterShield Xi-Series Assembly Details**

## Table of Contents

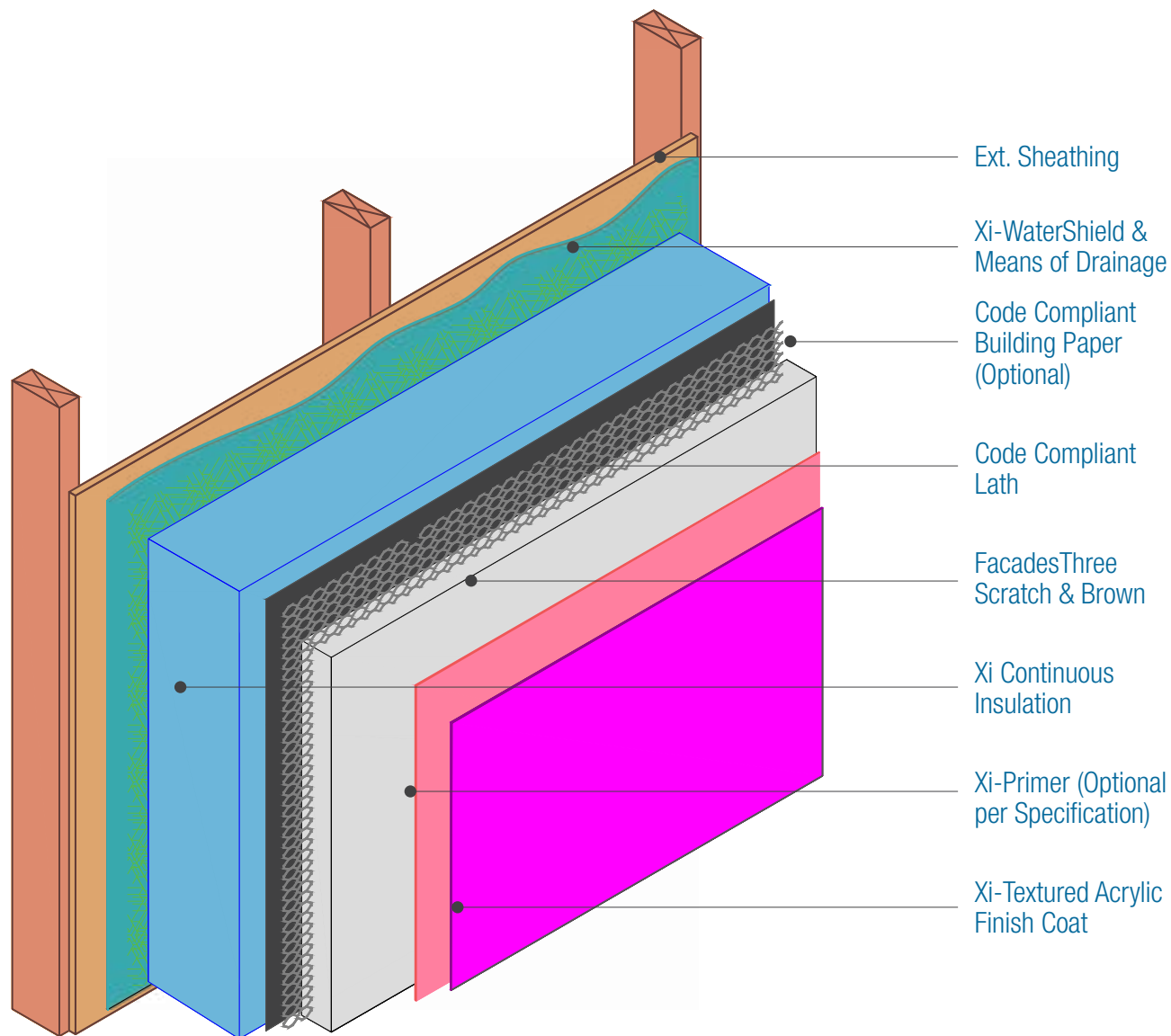




15262 Capital Port  
San Antonio, TX 78249  
1-800-611-6602  
facadesxi.com

## FacadesThree WaterShield Xi-Series Assembly Overview - Isometric

Date: 06-15-2021 | Detail: F3WSXI.I.1 v1



### NOTES:

1. FXI WaterShield transition and accessory products and installation can be found in the project specifications, product datasheets and the WaterShield Details.
2. A specific means of drainage plane is required in certain building codes and construction types. Check with your specific code or contact FXI Technical Services for assistance.

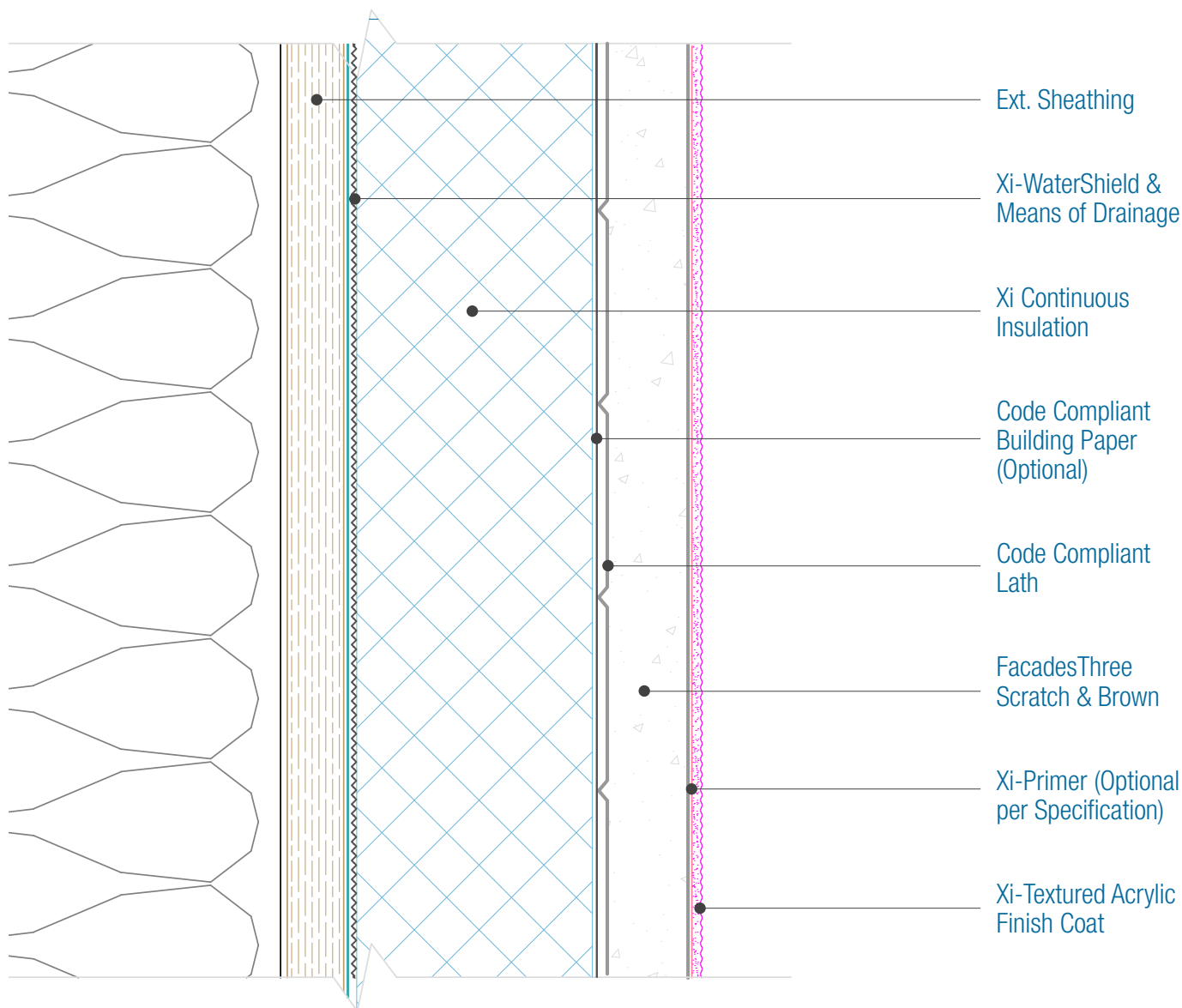
**DISCLAIMER:** FACADESXi details are recommendations that should be used for guidance only. There may be equivalent means of installation that are not shown in FACADESXi assembly details. All FACADESXi products shall be installed in accordance with FACADESXi product datasheets and all applicable building codes and industry standard practices. The design, engineering and final details incorporating any FACADESXi product are the sole responsibility of the project design professional. FACADESXi is not responsible for determining the acceptability and/or applicability of any FACADESXi product or detail for any specific project or condition. FACADESXi disclaims all liability for improper installation, workmanship, or design by a third-party. EXCEPT FOR ANY EXPRESS REPRESENTATIONS AND WARRANTIES BY FACADESXi, ALL IMPLIED WARRANTIES OF ANY KIND, INCLUDING BUT NOT LIMITED TO WARRANTIES OF MERCHANTABILITY OR FITNESS FOR A PARTICULAR PURPOSE OR COMPLIANCE WITH LAWS OR GOVERNMENT RULES OR REGULATIONS APPLICABLE TO THE PROJECT, ARE HEREBY DISCLAIMED. FACADESXi's website should always be consulted for the latest version of any details and/or product information. Contact FACADESXi for any technical assistance.



15262 Capital Port  
San Antonio, TX 78249  
1-800-611-6602  
facadesxi.com

# FacadesThree WaterShield Xi-Series Assembly Overview

Date: 06-15-2021 | Detail: F3WSXi.I.2 v1



## NOTES:

1. For full assembly options, materials and placement of materials refer to the specific FACADESXi System specifications.
2. FXI WaterShield transition and accessory products and installation can be found in the project specifications, product datasheets and the WaterShield Details.
3. A specific means of drainage plane is required in certain building codes and construction types. Check with your specific code or contact FXI Technical Services for assistance.

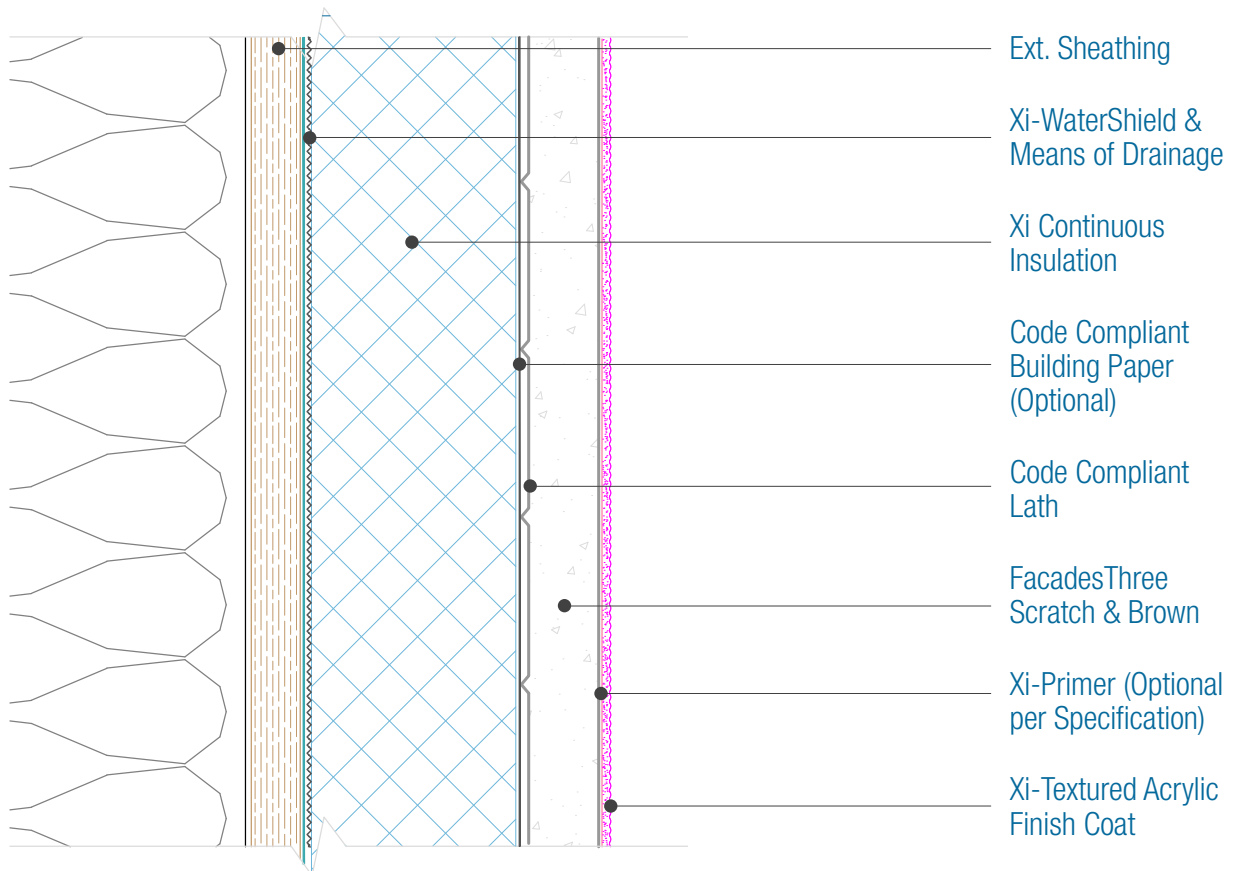
**DISCLAIMER:** FACADESXi details are recommendations that should be used for guidance only. There may be equivalent means of installation that are not shown in FACADESXi assembly details. All FACADESXi products shall be installed in accordance with FACADESXi product datasheets and all applicable building codes and industry standard practices. The design, engineering and final details incorporating any FACADESXi product are the sole responsibility of the project design professional. FACADESXi is not responsible for determining the acceptability and/or applicability of any FACADESXi product or detail for any specific project or condition. FACADESXi disclaims all liability for improper installation, workmanship, or design by a third-party. EXCEPT FOR ANY EXPRESS REPRESENTATIONS AND WARRANTIES BY FACADESXi, ALL IMPLIED WARRANTIES OF ANY KIND, INCLUDING BUT NOT LIMITED TO WARRANTIES OF MERCHANTABILITY OR FITNESS FOR A PARTICULAR PURPOSE OR COMPLIANCE WITH LAWS OR GOVERNMENT RULES OR REGULATIONS APPLICABLE TO THE PROJECT, ARE HEREBY DISCLAIMED. FACADESXi's website should always be consulted for the latest version of any details and/or product information. Contact FACADESXi for any technical assistance.



15262 Capital Port  
San Antonio, TX 78249  
1-800-611-6602  
facadesxi.com

# FacadesThree WaterShield Xi-Series Assembly Components

Date: 06-15-2021 | Detail: F3WSXI.1.3 v1



## Framing

☐ Wood ☐ Metal

## Sheathing

☐ OSB  
☐ Plywood  
☐ Cement Board  
☐ Fiberglass Faced  
☐ Gypsum

## Xi Continuous Insulation

☐ EPS ☐ Polyiso  
☐ XPS ☐ Other

## Water / Air Barrier

☐ Xi-WaterShield  
☐ WaterShield Joint Mesh  
☐ WaterShield Flashing Tape  
☐ Xi-Flashfill

## Means of Drainage

☐ Drainage Insulation Board  
☐ Tyvek Stuccowrap/Equal  
☐ Drainage Mat

## Code Compliant Building Paper

☐ By Others

## Code Compliant Lath

☐ 2.5lb/yd<sup>2</sup> Expanded Metal Lath  
☐ Plastic Lath  
☐ Per Specifications

## FacadesThree Stucco Base

☐ FacadesThree Concentrate  
☐ FacadesThree Sanded

## Primer (Optional per specification)

☐ Xi-Alkali Resistant Primer

## Xi-Textured Acrylic Finish Coat

☐ Smooth ☐ Fine ☐ Coarse

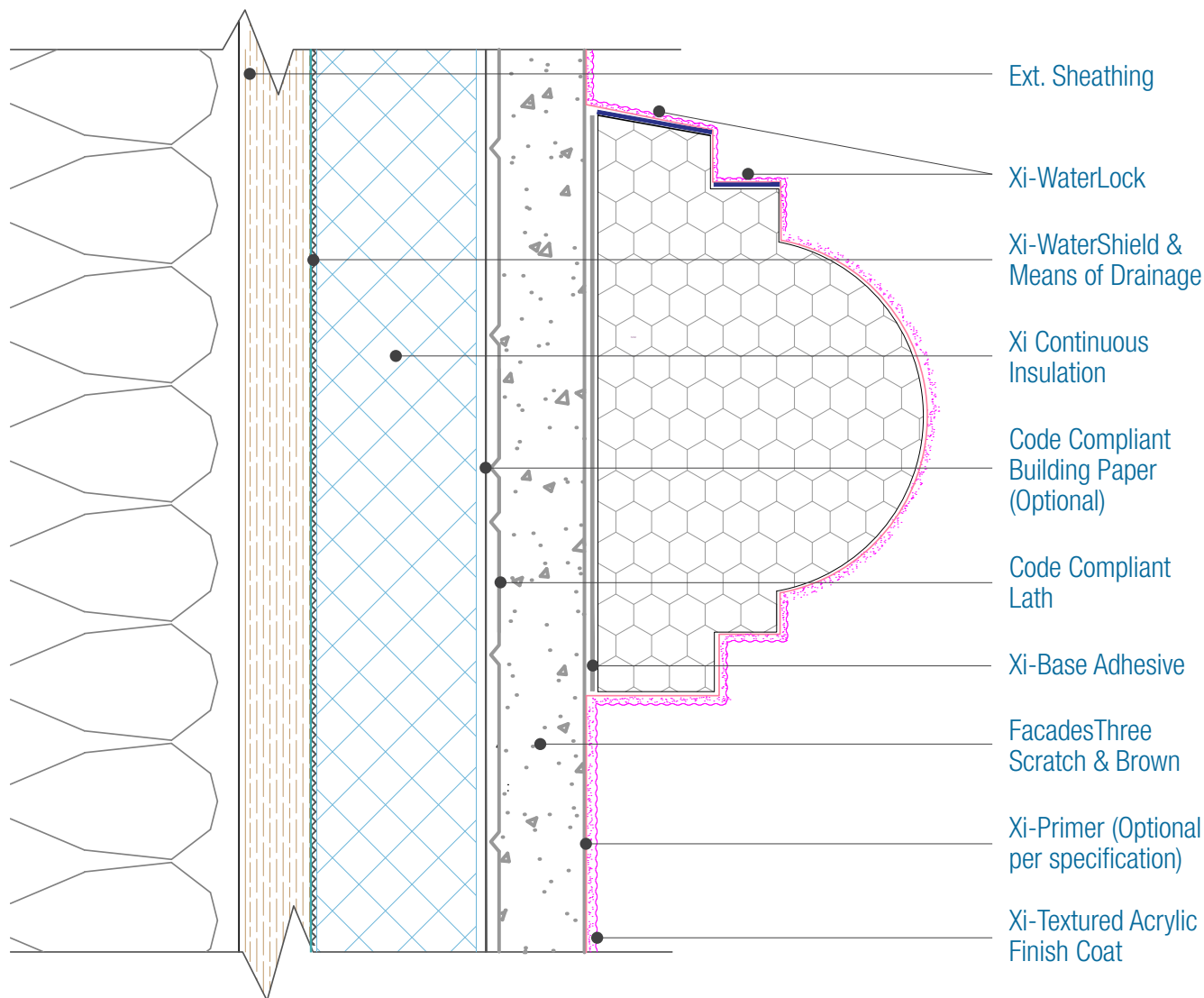
**DISCLAIMER:** FACADESXi details are recommendations that should be used for guidance only. There may be equivalent means of installation that are not shown in FACADESXi assembly details. All FACADESXi products shall be installed in accordance with FACADESXi product datasheets and all applicable building codes and industry standard practices. The design, engineering and final details incorporating any FACADESXi product are the sole responsibility of the project design professional. FACADESXi is not responsible for determining the acceptability and/or applicability of any FACADESXi product or detail for any specific project or condition. FACADESXi disclaims all liability for improper installation, workmanship, or design by a third-party. EXCEPT FOR ANY EXPRESS REPRESENTATIONS AND WARRANTIES BY FACADESXi, ALL IMPLIED WARRANTIES OF ANY KIND, INCLUDING BUT NOT LIMITED TO WARRANTIES OF MERCHANTABILITY OR FITNESS FOR A PARTICULAR PURPOSE OR COMPLIANCE WITH LAWS OR GOVERNMENT RULES OR REGULATIONS APPLICABLE TO THE PROJECT, ARE HEREBY DISCLAIMED. FACADESXi's website should always be consulted for the latest version of any details and/or product information. Contact FACADESXi for any technical assistance.



15262 Capital Port  
San Antonio, TX 78249  
1-800-611-6602  
facadesxi.com

## FacadesThree WaterShield Xi-Series Foam Shape

Date. 06-15-2021 | Detail. F3WSXi.I.4 v1



### NOTES:

1. FXI WaterShield transition and accessory products and installation can be found in the project specifications, product datasheets and the WaterShield Details.
2. A specific means of drainage plane is required in certain building codes and construction types. Check with your specific code or contact FXI Technical Services for assistance.
3. Foam shape thickness for Non-combustible construction are limited to 4 inches in thickness.
4. Horizontal Sloped surfaces of foam shapes must be coated with FACADESXi-WaterLock.
5. Slope Minimums: Standing Snow areas - 6:12, No Standing Snow - 3:12

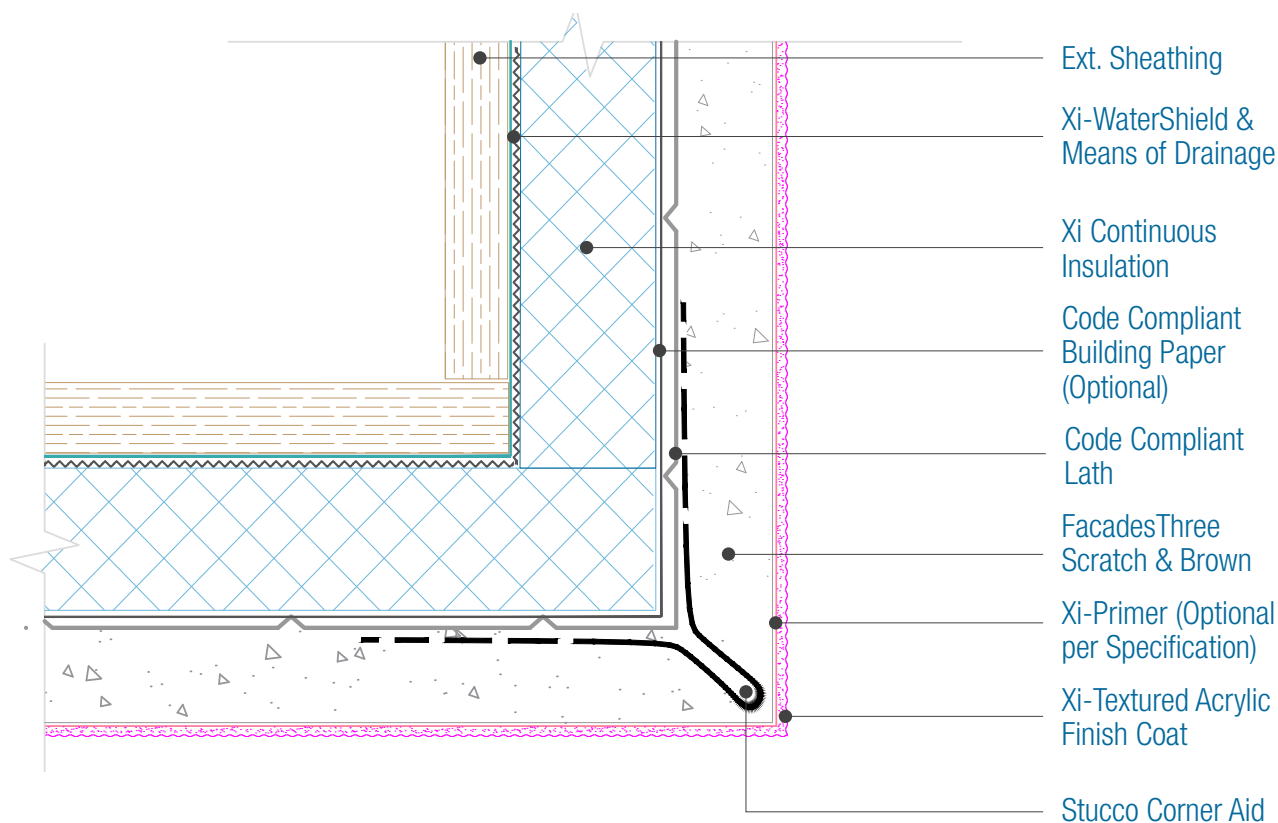
**DISCLAIMER:** FACADESXi details are recommendations that should be used for guidance only. There may be equivalent means of installation that are not shown in FACADESXi assembly details. All FACADESXi products shall be installed in accordance with FACADESXi product datasheets and all applicable building codes and industry standard practices. The design, engineering and final details incorporating any FACADESXi product are the sole responsibility of the project design professional. FACADESXi is not responsible for determining the acceptability and/or applicability of any FACADESXi product or detail for any specific project or condition. FACADESXi disclaims all liability for improper installation, workmanship, or design by a third-party. EXCEPT FOR ANY EXPRESS REPRESENTATIONS AND WARRANTIES BY FACADESXi, ALL IMPLIED WARRANTIES OF ANY KIND, INCLUDING BUT NOT LIMITED TO WARRANTIES OF MERCHANTABILITY OR FITNESS FOR A PARTICULAR PURPOSE OR COMPLIANCE WITH LAWS OR GOVERNMENT RULES OR REGULATIONS APPLICABLE TO THE PROJECT, ARE HEREBY DISCLAIMED. FACADESXi's website should always be consulted for the latest version of any details and/or product information. Contact FACADESXi for any technical assistance.



15262 Capital Port  
San Antonio, TX 78249  
1-800-611-6602  
facadesxi.com

## FacadesThree WaterShield Xi-Series Outside Corner

Date. 06-15-2021 | Detail. F3WSXI.1.5 v1



### NOTES:

1. For full assembly options, materials and placement of materials refer to the specific FACADESXi System specifications.
2. FXI WaterShield transition and accessory products and installation can be found in the project specifications, product datasheets and the WaterShield Details.
3. A specific means of drainage plane is required in certain building codes and construction types. Check with your specific code or contact FXI Technical Services for assistance.

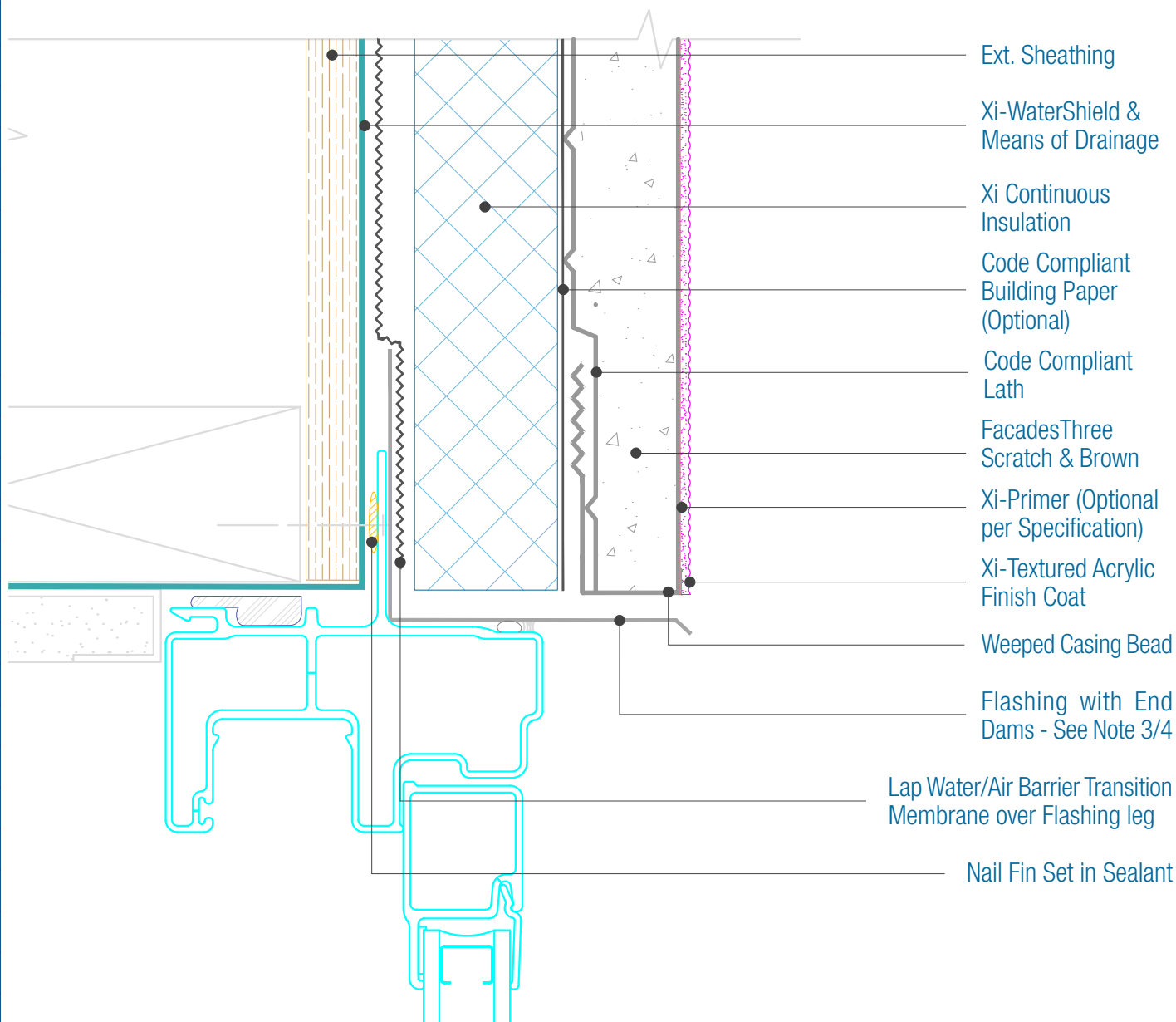
**DISCLAIMER:** FACADESXi details are recommendations that should be used for guidance only. There may be equivalent means of installation that are not shown in FACADESXi assembly details. All FACADESXi products shall be installed in accordance with FACADESXi product datasheets and all applicable building codes and industry standard practices. The design, engineering and final details incorporating any FACADESXi product are the sole responsibility of the project design professional. FACADESXi is not responsible for determining the acceptability and/or applicability of any FACADESXi product or detail for any specific project or condition. FACADESXi disclaims all liability for improper installation, workmanship, or design by a third-party. EXCEPT FOR ANY EXPRESS REPRESENTATIONS AND WARRANTIES BY FACADESXi, ALL IMPLIED WARRANTIES OF ANY KIND, INCLUDING BUT NOT LIMITED TO WARRANTIES OF MERCHANTABILITY OR FITNESS FOR A PARTICULAR PURPOSE OR COMPLIANCE WITH LAWS OR GOVERNMENT RULES OR REGULATIONS APPLICABLE TO THE PROJECT, ARE HEREBY DISCLAIMED. FACADESXi's website should always be consulted for the latest version of any details and/or product information. Contact FACADESXi for any technical assistance.



15262 Capital Port  
San Antonio, TX 78249  
1-800-611-6602  
facadesxi.com

## FacadesThree WaterShield Xi-Series Nail Fin Window Head

Date: 06-15-2021 | Detail: F3WSXI.II.1 v1



### NOTES:

1. Attach penetrations to structural member.
2. Provide Air Tight seals at all penetrations.
3. Responsibility of the flashing is not necessarily that of the plastering contractor and should be denoted in the contract documents.
4. Flashing must be installed with End Dams and be completely watertight
5. FXI WaterShield transition and accessory products and installation can be found in the project specifications, product datasheets and the WaterShield Details.
6. A specific means of drainage plane is required in certain building codes and construction types. Check with your specific code or contact FXI Technical Services for assistance.

**DISCLAIMER:** FACADESXI details are recommendations that should be used for guidance only. There may be equivalent means of installation that are not shown in FACADESXI assembly details. All FACADESXI products shall be installed in accordance with FACADESXI product datasheets and all applicable building codes and industry standard practices. The design, engineering and final details incorporating any FACADESXI product are the sole responsibility of the project design professional. FACADESXI is not responsible for determining the acceptability and/or applicability of any FACADESXI product or detail for any specific project or condition. FACADESXI disclaims all liability for improper installation, workmanship, or design by a third-party. EXCEPT FOR ANY EXPRESS REPRESENTATIONS AND WARRANTIES BY FACADESXI, ALL IMPLIED WARRANTIES OF ANY KIND, INCLUDING BUT NOT LIMITED TO WARRANTIES OF MERCHANTABILITY OR FITNESS FOR A PARTICULAR PURPOSE OR COMPLIANCE WITH LAWS OR GOVERNMENT RULES OR REGULATIONS APPLICABLE TO THE PROJECT, ARE HEREBY DISCLAIMED. FACADESXI's website should always be consulted for the latest version of any details and/or product information. Contact FACADESXI for any technical assistance.

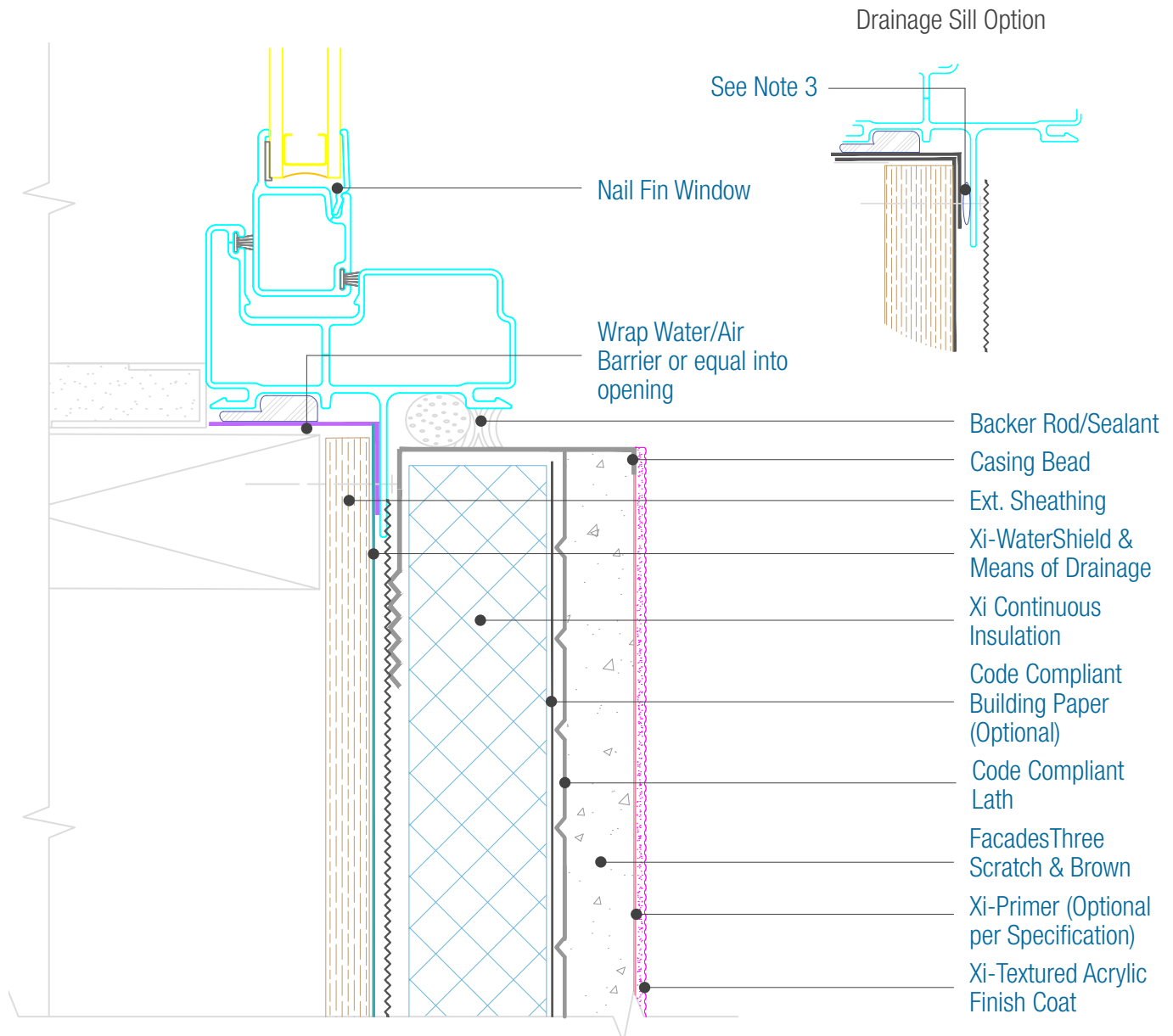




15262 Capital Port  
San Antonio, TX 78249  
1-800-611-6602  
facadesxi.com

## FacadesThree WaterShield Xi-Series Nail-Fin Window Sill and Jamb

Date: 06-15-2021 | Detail: F3WSXi.II.2 v1



### NOTES:

1. There must be continuous airtightness over the entire building enclosure, where required by code. The actual project detail must show this continuity.
2. Provide Air Tight seals at all perimeter of window for an airtight seal.
3. At Sill, for a window that will drain behind the fin, spacers should be installed to accommodate drainage and not sealed, use Drainage Sill Option.
4. For Rough Opening Protection and options see Water/Air Barrier Manufacturers installation instructions
5. FXI WaterShield transition and accessory products and installation can be found in the project specifications, product datasheets and the WaterShield Details.
6. A specific means of drainage plane is required in certain building codes and construction types. Check with your specific code or contact FXI Technical Services for assistance.

**DISCLAIMER:** FACADESXi details are recommendations that should be used for guidance only. There may be equivalent means of installation that are not shown in FACADESXi assembly details. All FACADESXi products shall be installed in accordance with FACADESXi product datasheets and all applicable building codes and industry standard practices. The design, engineering and final details incorporating any FACADESXi product are the sole responsibility of the project design professional. FACADESXi is not responsible for determining the acceptability and/or applicability of any FACADESXi product or detail for any specific project or condition. FACADESXi disclaims all liability for improper installation, workmanship, or design by a third-party. EXCEPT FOR ANY EXPRESS REPRESENTATIONS AND WARRANTIES BY FACADESXi, ALL IMPLIED WARRANTIES OF ANY KIND, INCLUDING BUT NOT LIMITED TO WARRANTIES OF MERCHANTABILITY OR FITNESS FOR A PARTICULAR PURPOSE OR COMPLIANCE WITH LAWS OR GOVERNMENT RULES OR REGULATIONS APPLICABLE TO THE PROJECT, ARE HEREBY DISCLAIMED. FACADESXi's website should always be consulted for the latest version of any details and/or product information. Contact FACADESXi for any technical assistance.



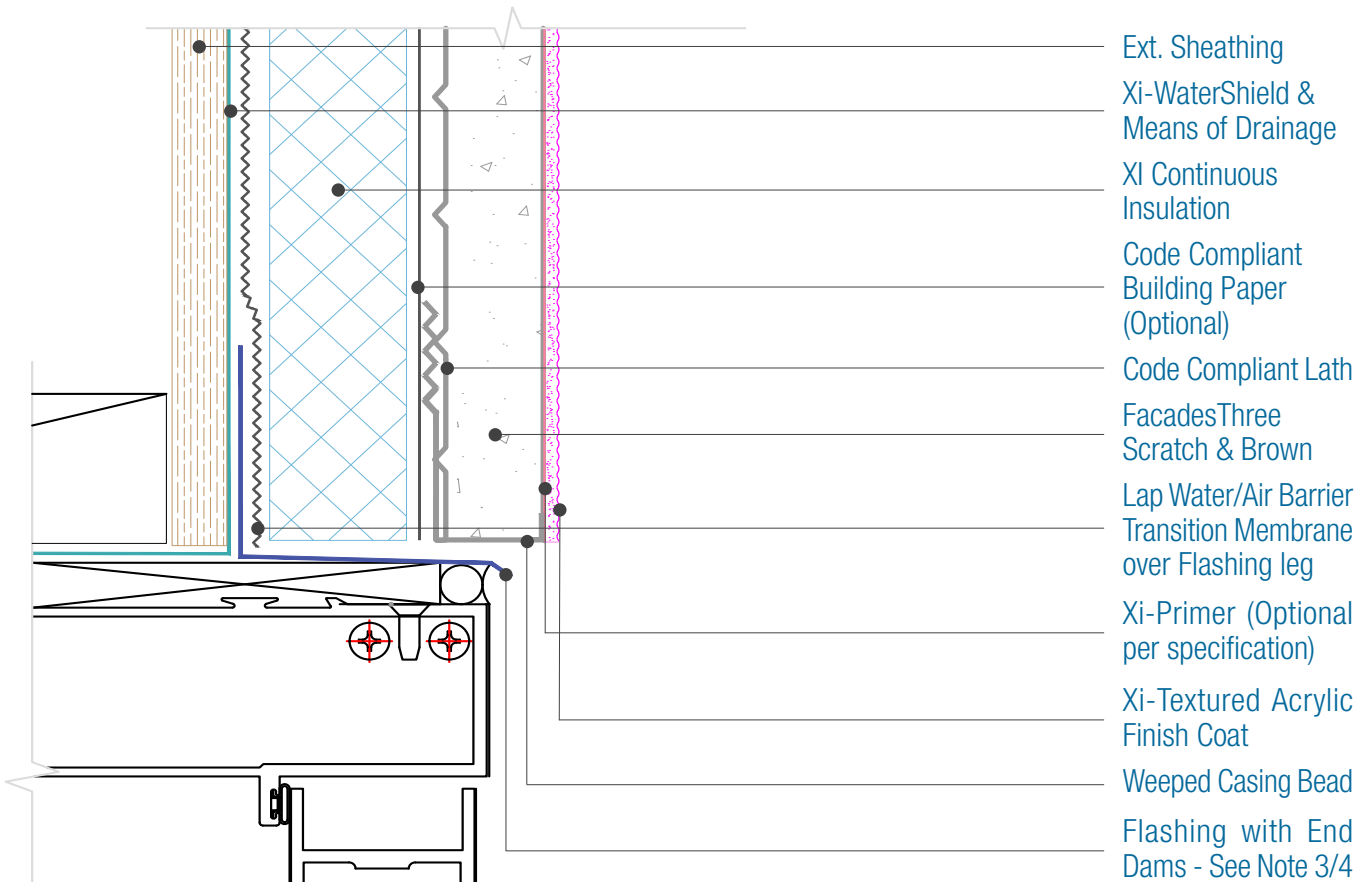
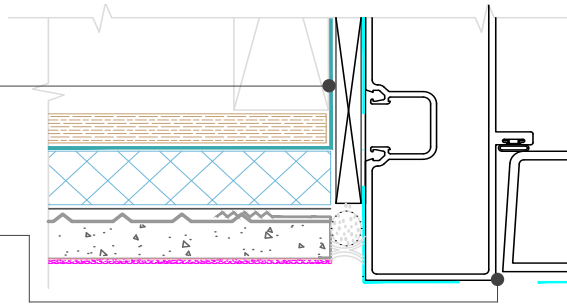
15262 Capital Port  
San Antonio, TX 78249  
1-800-611-6602  
facadesxi.com

## FacadesThree WaterShield Xi-Series Storefront Window Head and Jamb

Date. 06-15-2021 | Detail. F3WSXI.II.3 v1

Wrap Water/Air  
Barrier into opening

Sill Pan Below  
See Note 3



Ext. Sheathing  
Xi-WaterShield &  
Means of Drainage  
XI Continuous  
Insulation  
Code Compliant  
Building Paper  
(Optional)  
Code Compliant Lath  
FacadesThree  
Scratch & Brown  
Lap Water/Air Barrier  
Transition Membrane  
over Flashing leg  
Xi-Primer (Optional  
per specification)  
Xi-Textured Acrylic  
Finish Coat  
Weeped Casing Bead  
Flashing with End  
Dams - See Note 3/4

### NOTES:

1. Provide Air Tight seals at all perimeter of opening for an airtight seal.
2. For Rough Opening Protection and options see Water/Air Barrier Manufacturers installation
3. The Door must be set in a pan flashing and rough opening protection wrapped into that pan flashing.
4. Responsibility of the flashing is not necessarily that of the plastering contractor and should be denoted in the contract documents.
5. Flashing must be installed with End Dams and be completely watertight
6. FXI WaterShield transition and accessory products and installation can be found in the project specifications, product datasheets and the WaterShield Details.
7. A specific means of drainage plane is required in certain building codes and construction types. Check with your specific code or contact FXI Technical Services for assistance.

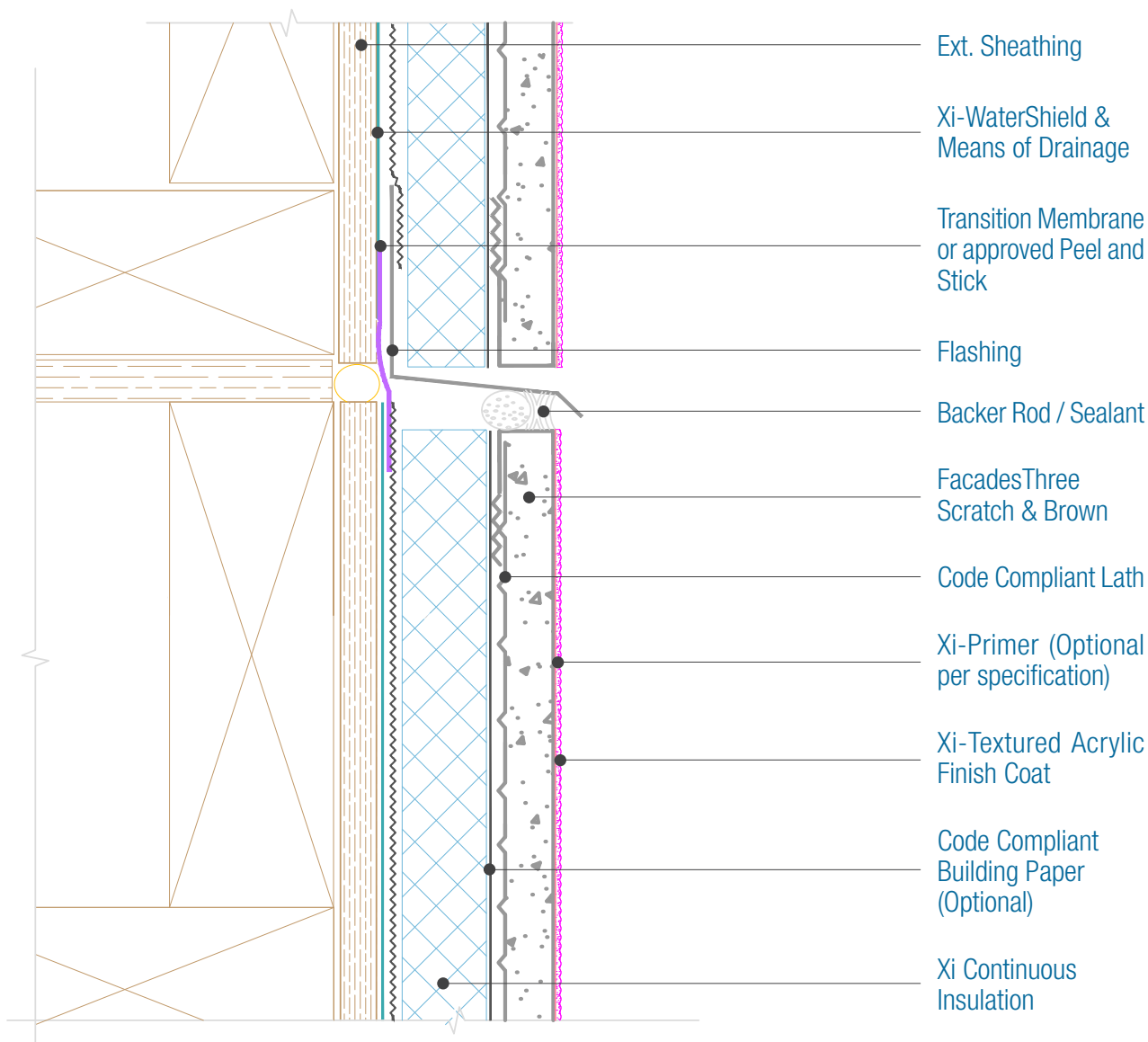
**DISCLAIMER:** FACADESXI details are recommendations that should be used for guidance only. There may be equivalent means of installation that are not shown in FACADESXI assembly details. All FACADESXI products shall be installed in accordance with FACADESXI product datasheets and all applicable building codes and industry standard practices. The design, engineering and final details incorporating any FACADESXI product are the sole responsibility of the project design professional. FACADESXI is not responsible for determining the acceptability and/or applicability of any FACADESXI product or detail for any specific project or condition. FACADESXI disclaims all liability for improper installation, workmanship, or design by a third-party. EXCEPT FOR ANY EXPRESS REPRESENTATIONS AND WARRANTIES BY FACADESXI, ALL IMPLIED WARRANTIES OF ANY KIND, INCLUDING BUT NOT LIMITED TO WARRANTIES OF MERCHANTABILITY OR FITNESS FOR A PARTICULAR PURPOSE OR COMPLIANCE WITH LAWS OR GOVERNMENT RULES OR REGULATIONS APPLICABLE TO THE PROJECT, ARE HEREBY DISCLAIMED. FACADESXI's website should always be consulted for the latest version of any details and/or product information. Contact FACADESXI for any technical assistance.



15262 Capital Port  
San Antonio, TX 78249  
1-800-611-6602  
facadesxi.com

## FacadesThree WaterShield Xi-Series Expansion Joint

Date: 06-15-2021 | Detail: F3WSXI.III.1 v1



### NOTES:

1. There must be continuous airtightness over the entire building enclosure, where required by code. The actual project detail must show this continuity.
2. Attach penetrations to structural member.
3. Responsibility of the flashing is not necessarily that of the plastering contractor and should be denoted in the contract documents.
4. Flashing must be installed with End Dams and be completely watertight.
5. FXI WaterShield transition and accessory products and installation can be found in the project specifications, product datasheets and the WaterShield Details.
6. A specific means of drainage plane is required in certain building codes and construction types. Check with your specific code or contact FXI Technical Services for assistance.

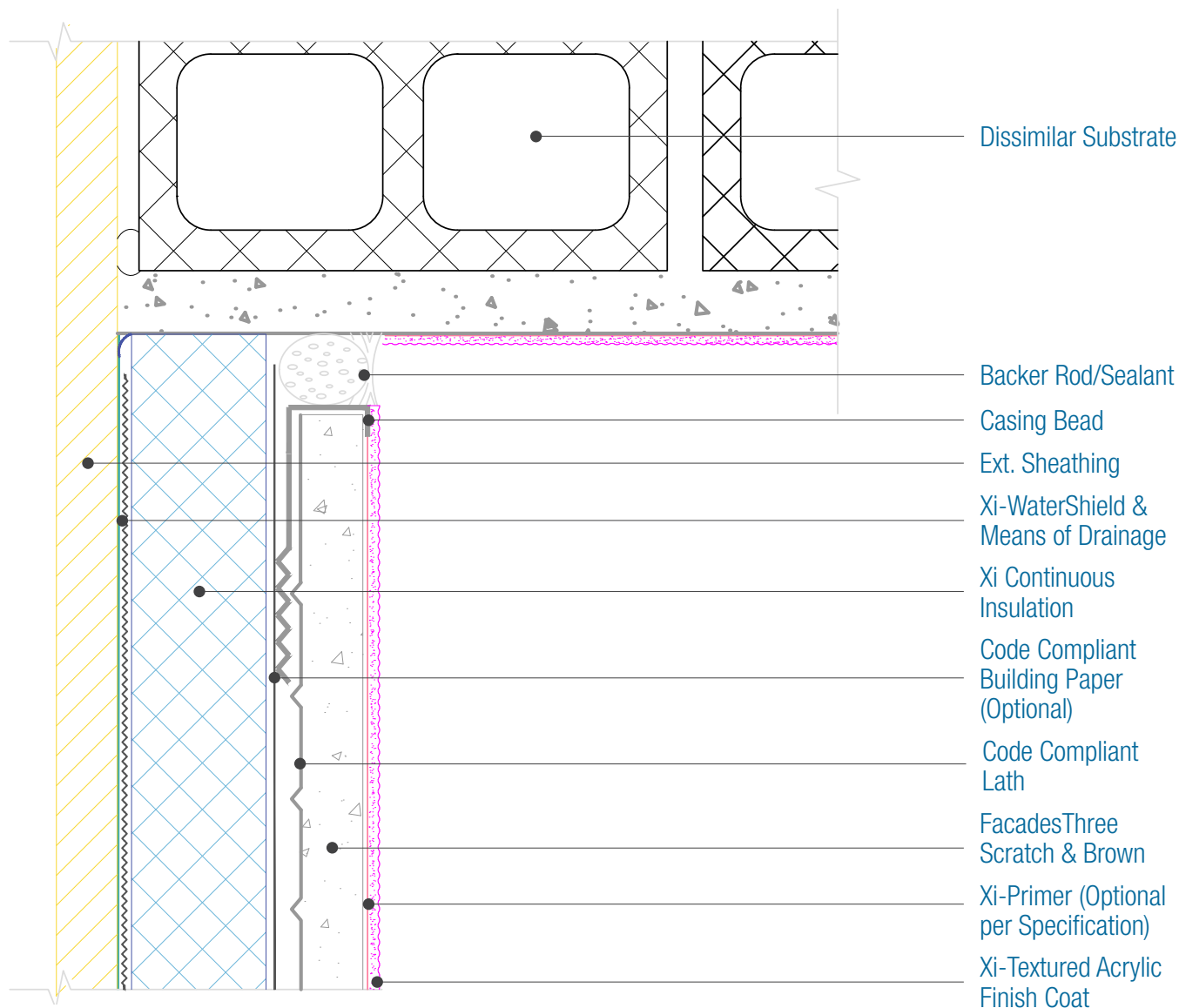
**DISCLAIMER:** FACADESXi details are recommendations that should be used for guidance only. There may be equivalent means of installation that are not shown in FACADESXi assembly details. All FACADESXi products shall be installed in accordance with FACADESXi product datasheets and all applicable building codes and industry standard practices. The design, engineering and final details incorporating any FACADESXi product are the sole responsibility of the project design professional. FACADESXi is not responsible for determining the acceptability and/or applicability of any FACADESXi product or detail for any specific project or condition. FACADESXi disclaims all liability for improper installation, workmanship, or design by a third-party. EXCEPT FOR ANY EXPRESS REPRESENTATIONS AND WARRANTIES BY FACADESXi, ALL IMPLIED WARRANTIES OF ANY KIND, INCLUDING BUT NOT LIMITED TO WARRANTIES OF MERCHANTABILITY OR FITNESS FOR A PARTICULAR PURPOSE OR COMPLIANCE WITH LAWS OR GOVERNMENT RULES OR REGULATIONS APPLICABLE TO THE PROJECT, ARE HEREBY DISCLAIMED. FACADESXi's website should always be consulted for the latest version of any details and/or product information. Contact FACADESXi for any technical assistance.



15262 Capital Port  
San Antonio, TX 78249  
1-800-611-6602  
facadesxi.com

## FacadesThree WaterShield Xi-Series Inside Corner Joint

Date: 06-15-2021 | Detail: F3WSXI.III.3 V1



### NOTES:

1. There must be continuous airtightness over the entire building enclosure, where required by code. The actual project detail must show this continuity.
2. For full assembly options, materials and placement of materials refer to the specific FACADESXi System specifications.
3. FXI WaterShield transition and accessory products and installation can be found in the project specifications, product datasheets and the WaterShield Details.
4. A specific means of drainage plane is required in certain building codes and construction types. Check with your specific code or contact FXI Technical Services for assistance.

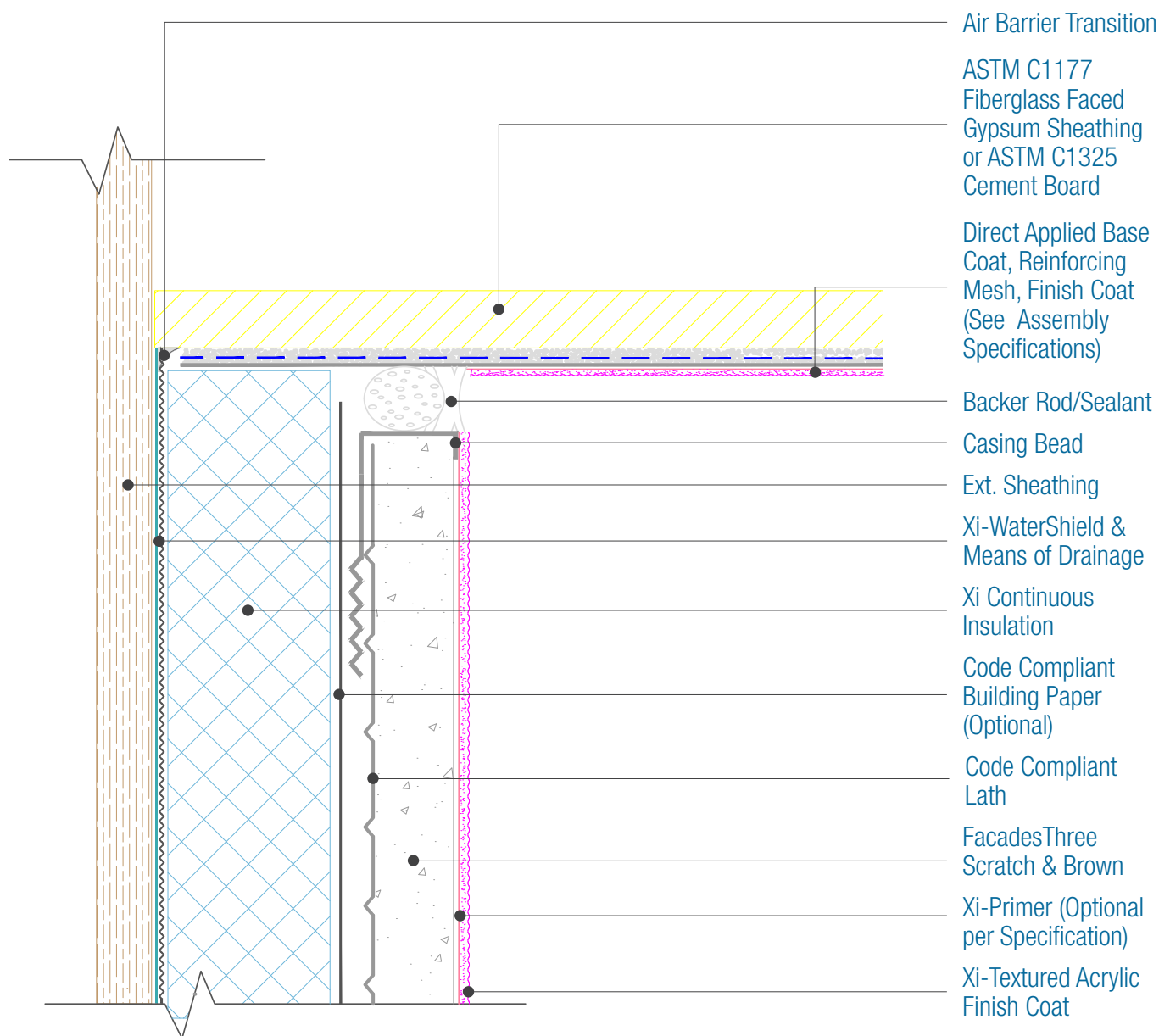
**DISCLAIMER:** FACADESXi details are recommendations that should be used for guidance only. There may be equivalent means of installation that are not shown in FACADESXi assembly details. All FACADESXi products shall be installed in accordance with FACADESXi product datasheets and all applicable building codes and industry standard practices. The design, engineering and final details incorporating any FACADESXi product are the sole responsibility of the project design professional. FACADESXi is not responsible for determining the acceptability and/or applicability of any FACADESXi product or detail for any specific project or condition. FACADESXi disclaims all liability for improper installation, workmanship, or design by a third-party. EXCEPT FOR ANY EXPRESS REPRESENTATIONS AND WARRANTIES BY FACADESXi, ALL IMPLIED WARRANTIES OF ANY KIND, INCLUDING BUT NOT LIMITED TO WARRANTIES OF MERCHANTABILITY OR FITNESS FOR A PARTICULAR PURPOSE OR COMPLIANCE WITH LAWS OR GOVERNMENT RULES OR REGULATIONS APPLICABLE TO THE PROJECT, ARE HEREBY DISCLAIMED. FACADESXi's website should always be consulted for the latest version of any details and/or product information. Contact FACADESXi for any technical assistance.



15262 Capital Port  
San Antonio, TX 78249  
1-800-611-6602  
facadesxi.com

## FacadesThree WaterShield Xi-Series Termination into Direct Applied Soffit

Date: 06-15-2021 | Detail: F3WSXI.IV.1 v1



### NOTES:

1. There must be continuous airtightness over the entire building enclosure, where required by code. The actual project detail must show this continuity.
2. For full assembly options, materials and placement of materials refer to the specific FACADESXI System specifications.
3. FXI WaterShield transition and accessory products and installation can be found in the project specifications, product datasheets and the WaterShield Details.
4. A specific means of drainage plane is required in certain building codes and construction types. Check with your specific code or contact FXI Technical Services for assistance.

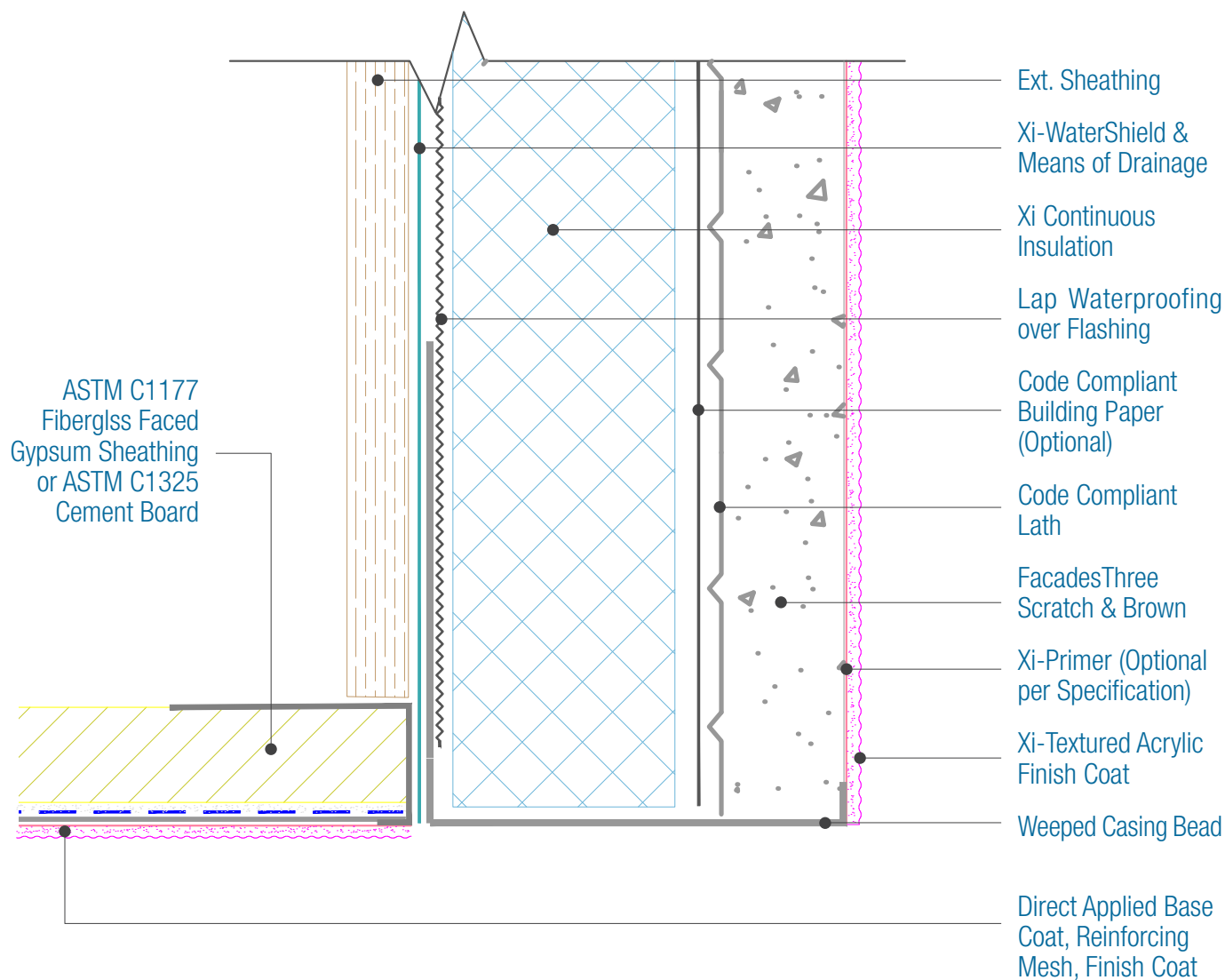
**DISCLAIMER:** FACADESXI details are recommendations that should be used for guidance only. There may be equivalent means of installation that are not shown in FACADESXI assembly details. All FACADESXI products shall be installed in accordance with FACADESXI product datasheets and all applicable building codes and industry standard practices. The design, engineering and final details incorporating any FACADESXI product are the sole responsibility of the project design professional. FACADESXI is not responsible for determining the acceptability and/or applicability of any FACADESXI product or detail for any specific project or condition. FACADESXI disclaims all liability for improper installation, workmanship, or design by a third-party. EXCEPT FOR ANY EXPRESS REPRESENTATIONS AND WARRANTIES BY FACADESXI, ALL IMPLIED WARRANTIES OF ANY KIND, INCLUDING BUT NOT LIMITED TO WARRANTIES OF MERCHANTABILITY OR FITNESS FOR A PARTICULAR PURPOSE OR COMPLIANCE WITH LAWS OR GOVERNMENT RULES OR REGULATIONS APPLICABLE TO THE PROJECT, ARE HEREBY DISCLAIMED. FACADESXI's website should always be consulted for the latest version of any details and/or product information. Contact FACADESXI for any technical assistance.



15262 Capital Port  
San Antonio, TX 78249  
1-800-611-6602  
facadesxi.com

## FacadesThree WaterShield Xi-Series Fascia Transition to Direct Applied Soffit

Date: 06-15-2021 | Detail: F3WSXI.IV.2 v1



### NOTES:

1. There must be continuous airtightness over the entire building enclosure, where required by code. The actual project detail must show this continuity.
2. The Fascia can drain either by wrapping the Water/Air Barrier or Transition Membrane into the Weeped Track or by draining between the Fascia and the Soffit PVC Accessories.
3. FXI WaterShield transition and accessory products and installation can be found in the project specifications, product datasheets and the WaterShield Details.
4. A specific means of drainage plane is required in certain building codes and construction types. Check with your specific code or contact FXI Technical Services for assistance.

**DISCLAIMER:** FACADESXi details are recommendations that should be used for guidance only. There may be equivalent means of installation that are not shown in FACADESXi assembly details. All FACADESXi products shall be installed in accordance with FACADESXi product datasheets and all applicable building codes and industry standard practices. The design, engineering and final details incorporating any FACADESXi product are the sole responsibility of the project design professional. FACADESXi is not responsible for determining the acceptability and/or applicability of any FACADESXi product or detail for any specific project or condition. FACADESXi disclaims all liability for improper installation, workmanship, or design by a third-party. EXCEPT FOR ANY EXPRESS REPRESENTATIONS AND WARRANTIES BY FACADESXi, ALL IMPLIED WARRANTIES OF ANY KIND, INCLUDING BUT NOT LIMITED TO WARRANTIES OF MERCHANTABILITY OR FITNESS FOR A PARTICULAR PURPOSE OR COMPLIANCE WITH LAWS OR GOVERNMENT RULES OR REGULATIONS APPLICABLE TO THE PROJECT, ARE HEREBY DISCLAIMED. FACADESXi's website should always be consulted for the latest version of any details and/or product information. Contact FACADESXi for any technical assistance.

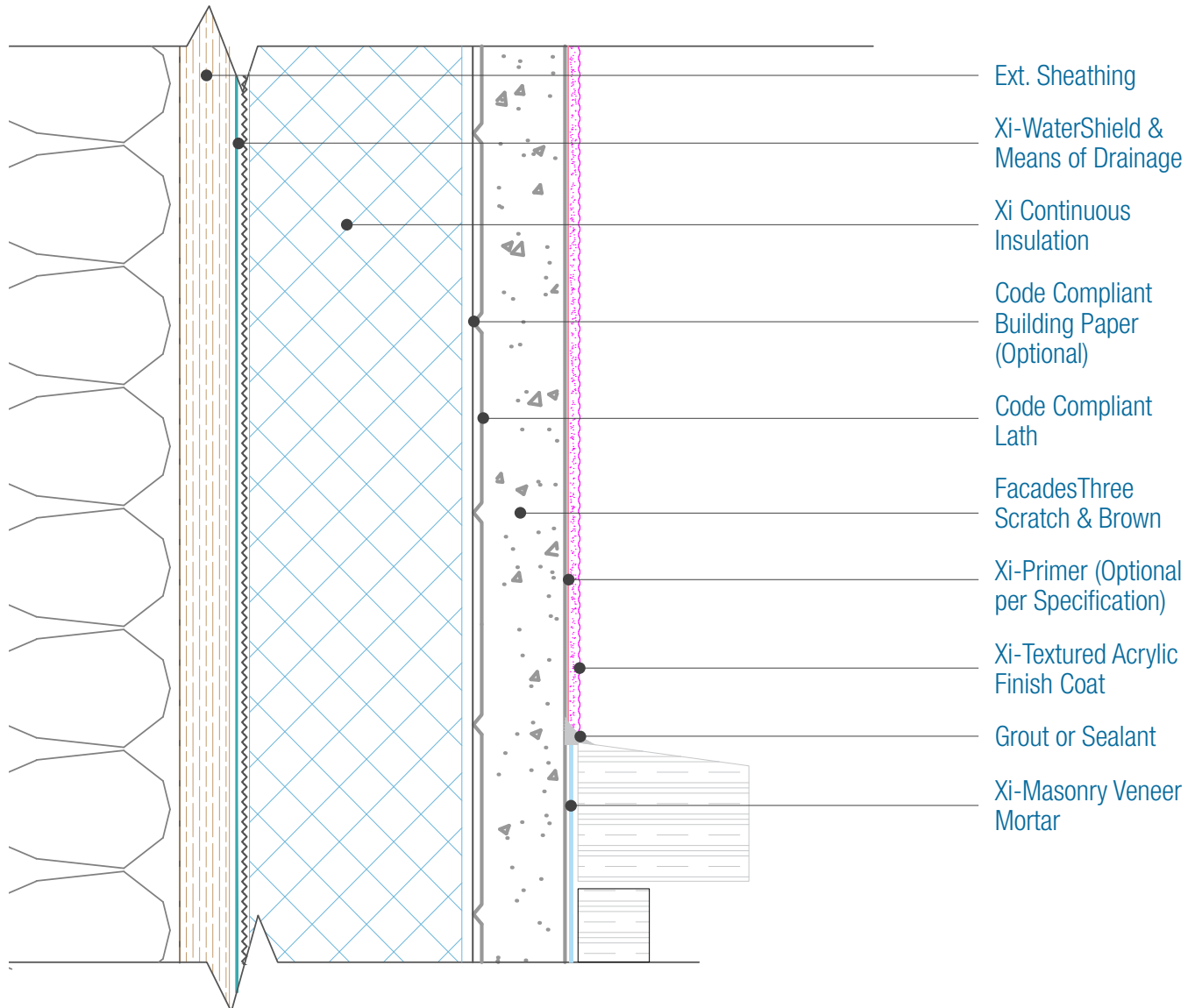




15262 Capital Port  
San Antonio, TX 78249  
1-800-611-6602  
facadesxi.com

## FacadesThree WaterShield Xi-Series Transition to Adhered Veneer

Date: 06-15-2021 | Detail: F3WSXI.IV.3 v1



### NOTES:

1. For full assembly options, materials and placement of materials refer to the specific FACADESXi System specifications.
2. FXI WaterShield transition and accessory products and installation can be found in the project specifications, product datasheets and the WaterShield Details.
3. A specific means of drainage plane is required in certain building codes and construction types. Check with your specific code or contact FXI Technical Services for assistance.

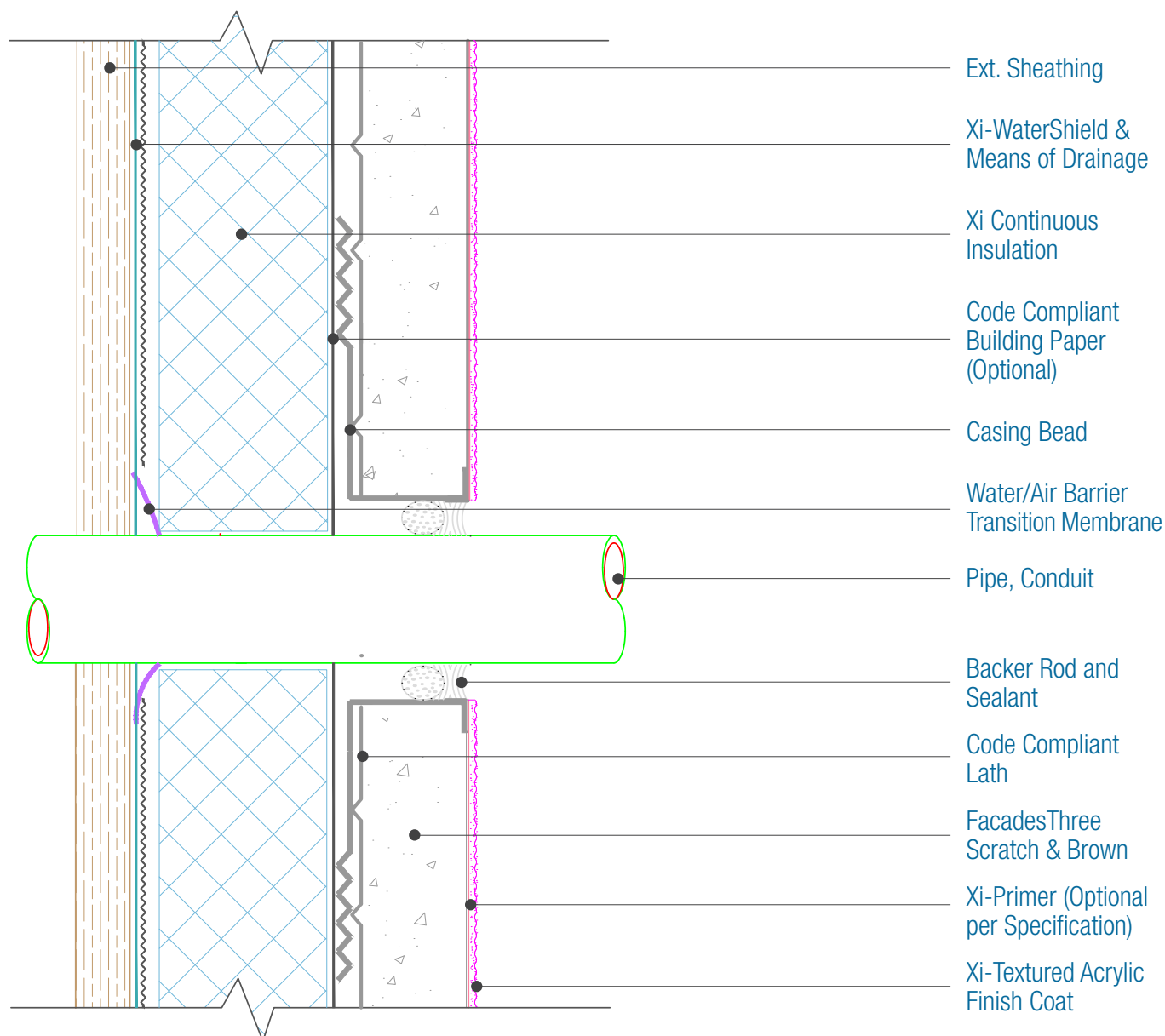
**DISCLAIMER:** FACADESXi details are recommendations that should be used for guidance only. There may be equivalent means of installation that are not shown in FACADESXi assembly details. All FACADESXi products shall be installed in accordance with FACADESXi product datasheets and all applicable building codes and industry standard practices. The design, engineering and final details incorporating any FACADESXi product are the sole responsibility of the project design professional. FACADESXi is not responsible for determining the acceptability and/or applicability of any FACADESXi product or detail for any specific project or condition. FACADESXi disclaims all liability for improper installation, workmanship, or design by a third-party. EXCEPT FOR ANY EXPRESS REPRESENTATIONS AND WARRANTIES BY FACADESXi, ALL IMPLIED WARRANTIES OF ANY KIND, INCLUDING BUT NOT LIMITED TO WARRANTIES OF MERCHANTABILITY OR FITNESS FOR A PARTICULAR PURPOSE OR COMPLIANCE WITH LAWS OR GOVERNMENT RULES OR REGULATIONS APPLICABLE TO THE PROJECT, ARE HEREBY DISCLAIMED. FACADESXi's website should always be consulted for the latest version of any details and/or product information. Contact FACADESXi for any technical assistance.



15262 Capital Port  
San Antonio, TX 78249  
1-800-611-6602  
facadesxi.com

## FacadesThree WaterShield Xi-Series Pipe/Conduit Penetration

Date: 06-15-2021 | Detail: F3WSXi.V.1 v1



### NOTES:

1. For full assembly options, materials and placement of materials refer to the specific FACADESXi System specifications.
2. A specific means of drainage plane is required in certain building codes and construction types. Check with your specific code or contact FXI Technical Services for assistance.
3. Pipe should be installed prior to the Cladding and the Water /air barrier transition membrane wrapped onto the pipe to create a water/air tight seal.
4. FXI WaterShield transition and accessory products and installation can be found in the project specifications, product datasheets and the WaterShield Details.

**DISCLAIMER:** FACADESXi details are recommendations that should be used for guidance only. There may be equivalent means of installation that are not shown in FACADESXi assembly details. All FACADESXi products shall be installed in accordance with FACADESXi product datasheets and all applicable building codes and industry standard practices. The design, engineering and final details incorporating any FACADESXi product are the sole responsibility of the project design professional. FACADESXi is not responsible for determining the acceptability and/or applicability of any FACADESXi product or detail for any specific project or condition. FACADESXi disclaims all liability for improper installation, workmanship, or design by a third-party. EXCEPT FOR ANY EXPRESS REPRESENTATIONS AND WARRANTIES BY FACADESXi, ALL IMPLIED WARRANTIES OF ANY KIND, INCLUDING BUT NOT LIMITED TO WARRANTIES OF MERCHANTABILITY OR FITNESS FOR A PARTICULAR PURPOSE OR COMPLIANCE WITH LAWS OR GOVERNMENT RULES OR REGULATIONS APPLICABLE TO THE PROJECT, ARE HEREBY DISCLAIMED. FACADESXi's website should always be consulted for the latest version of any details and/or product information. Contact FACADESXi for any technical assistance.

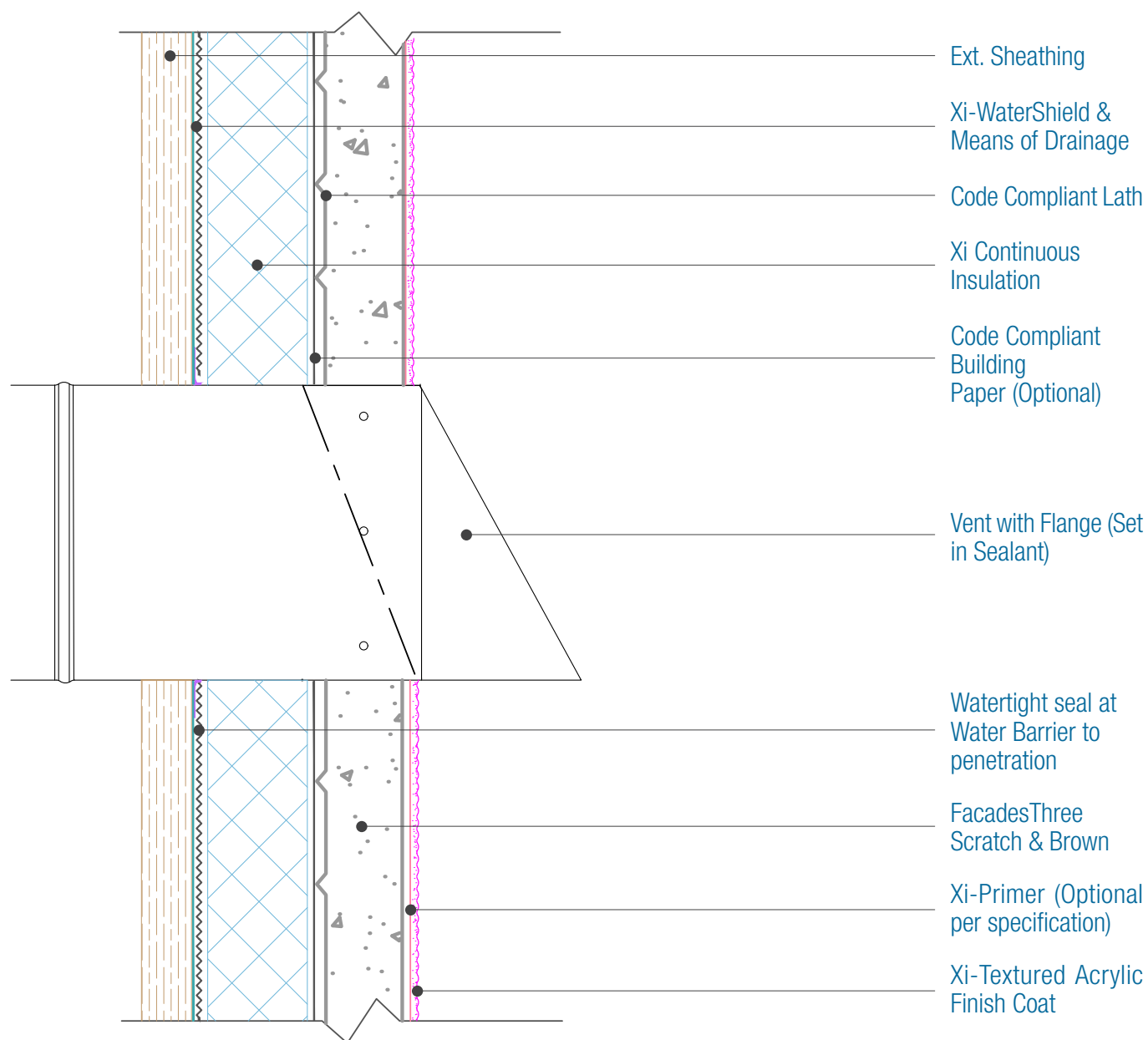




15262 Capital Port  
San Antonio, TX 78249  
1-800-611-6602  
facadesxi.com

## FacadesThree WaterShield Xi-Series Vent Attachment

Date: 06-15-2021 | Detail: F3WSXi.V.2 v1



### NOTES:

1. For full assembly options, materials and placement of materials refer to the specific FACADESXi System specifications.
2. FXI WaterShield transition and accessory products and installation can be found in the project specifications, product datasheets and the WaterShield Details.
3. A specific means of drainage plane is required in certain building codes and construction types. Check with your specific code or contact FXI Technical Services for assistance.
4. Attach penetrations to structural member and ensure the penetration is watertight.

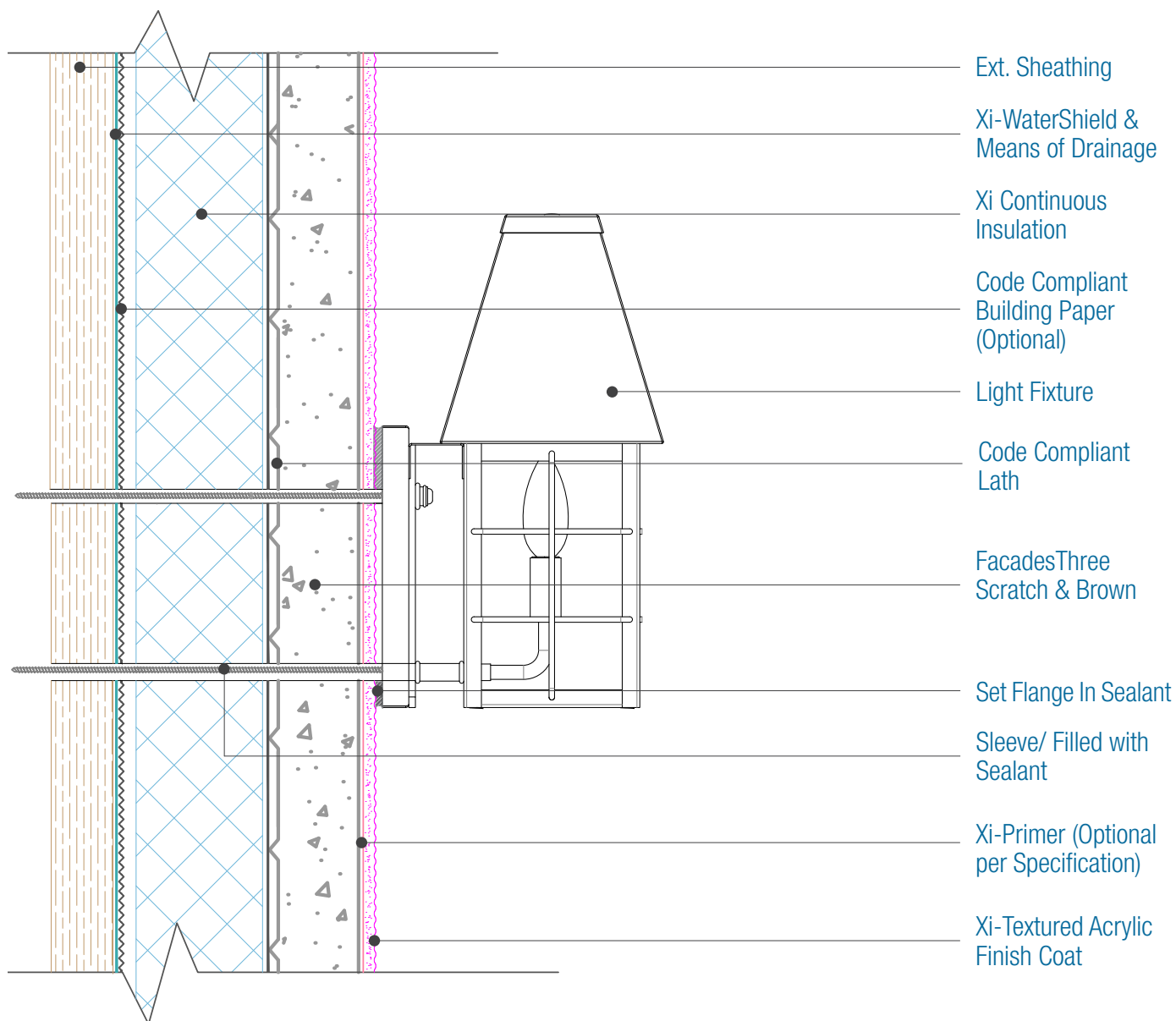
**DISCLAIMER:** FACADESXi details are recommendations that should be used for guidance only. There may be equivalent means of installation that are not shown in FACADESXi assembly details. All FACADESXi products shall be installed in accordance with FACADESXi product datasheets and all applicable building codes and industry standard practices. The design, engineering and final details incorporating any FACADESXi product are the sole responsibility of the project design professional. FACADESXi is not responsible for determining the acceptability and/or applicability of any FACADESXi product or detail for any specific project or condition. FACADESXi disclaims all liability for improper installation, workmanship, or design by a third-party. EXCEPT FOR ANY EXPRESS REPRESENTATIONS AND WARRANTIES BY FACADESXi, ALL IMPLIED WARRANTIES OF ANY KIND, INCLUDING BUT NOT LIMITED TO WARRANTIES OF MERCHANTABILITY OR FITNESS FOR A PARTICULAR PURPOSE OR COMPLIANCE WITH LAWS OR GOVERNMENT RULES OR REGULATIONS APPLICABLE TO THE PROJECT, ARE HEREBY DISCLAIMED. FACADESXi's website should always be consulted for the latest version of any details and/or product information. Contact FACADESXi for any technical assistance.



15262 Capital Port  
San Antonio, TX 78249  
1-800-611-6602  
facadesxi.com

## FacadesThree WaterShield Xi-Series Fixture Attachment

Date. 06-15-2021 | Detail. F3WSXI.V.3 v1



### NOTES:

1. For full assembly options, materials and placement of materials refer to the specific FACADESXi System specifications
2. FXI WaterShield transition and accessory products and installation can be found in the project specifications, product datasheets and the WaterShield Details.
3. A specific means of drainage plane is required in certain building codes and construction types. Check with your specific code or contact FXI Technical Services for assistance.
4. Attach penetrations to structural member.

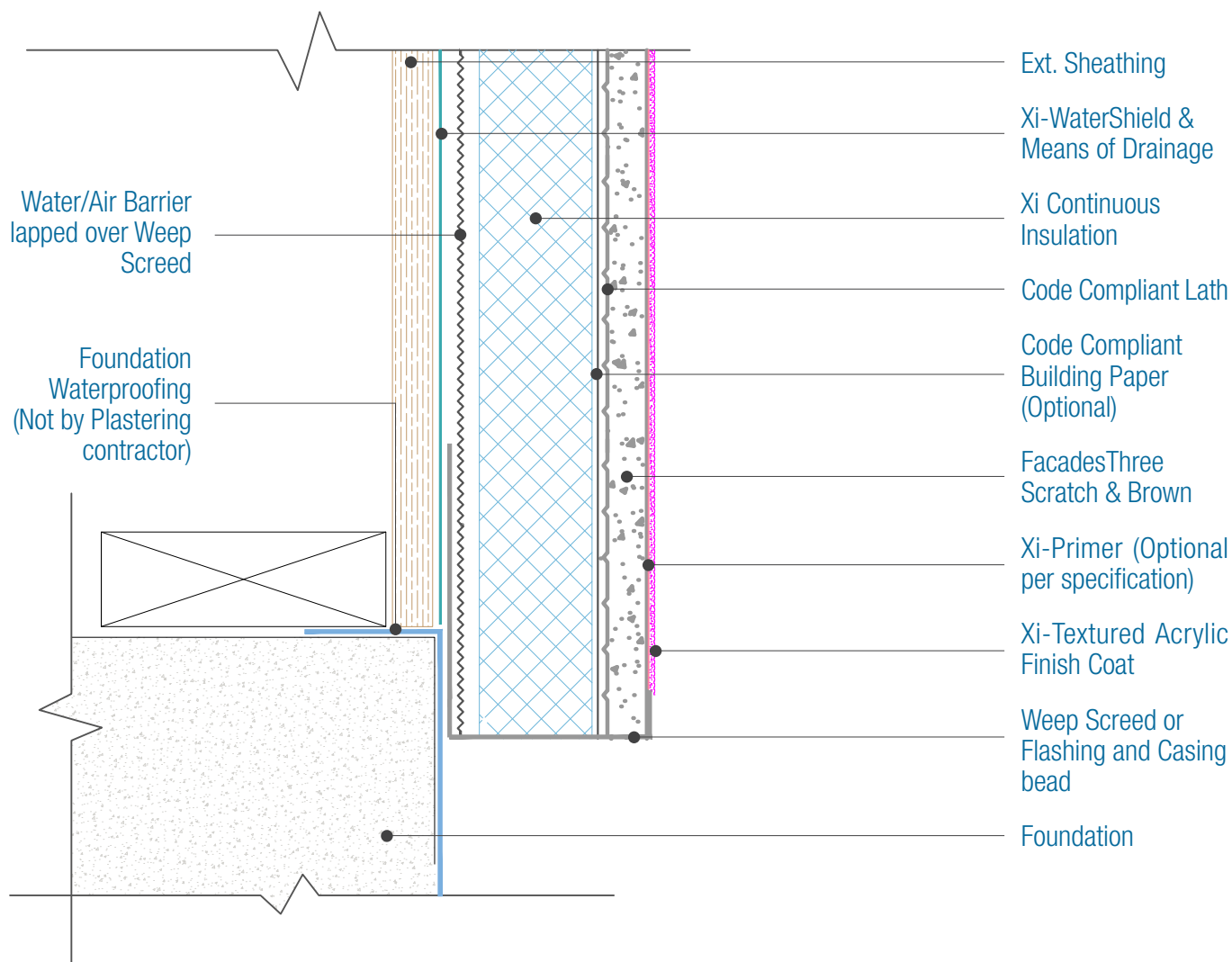
**DISCLAIMER:** FACADESXi details are recommendations that should be used for guidance only. There may be equivalent means of installation that are not shown in FACADESXi assembly details. All FACADESXi products shall be installed in accordance with FACADESXi product datasheets and all applicable building codes and industry standard practices. The design, engineering and final details incorporating any FACADESXi product are the sole responsibility of the project design professional. FACADESXi is not responsible for determining the acceptability and/or applicability of any FACADESXi product or detail for any specific project or condition. FACADESXi disclaims all liability for improper installation, workmanship, or design by a third-party. EXCEPT FOR ANY EXPRESS REPRESENTATIONS AND WARRANTIES BY FACADESXi, ALL IMPLIED WARRANTIES OF ANY KIND, INCLUDING BUT NOT LIMITED TO WARRANTIES OF MERCHANTABILITY OR FITNESS FOR A PARTICULAR PURPOSE OR COMPLIANCE WITH LAWS OR GOVERNMENT RULES OR REGULATIONS APPLICABLE TO THE PROJECT, ARE HEREBY DISCLAIMED. FACADESXi's website should always be consulted for the latest version of any details and/or product information. Contact FACADESXi for any technical assistance.



15262 Capital Port  
San Antonio, TX 78249  
1-800-611-6602  
facadesxi.com

# FacadesThree WaterShield Xi-Series Foundation

Date. 06-15-2021 | Detail. F3WSXI.VI.1 v1



## NOTES:

1. FXI WaterShield transition and accessory products and installation can be found in the project specifications, product datasheets and the WaterShield Details.
2. A specific means of drainage plane is required in certain building codes and construction types. Check with your specific code or contact FXI Technical Services for assistance.
3. Attach penetrations to structural member and ensure the penetration is watertight.
4. Drainage must be continuous either behind the accessory or into a weeped track.
5. Assembly Termination: Minimum 4" above earth, 2" above sidewalk.
6. Responsibility of the flashing is not necessarily that of the plastering contractor and should be denoted in the contract documents.

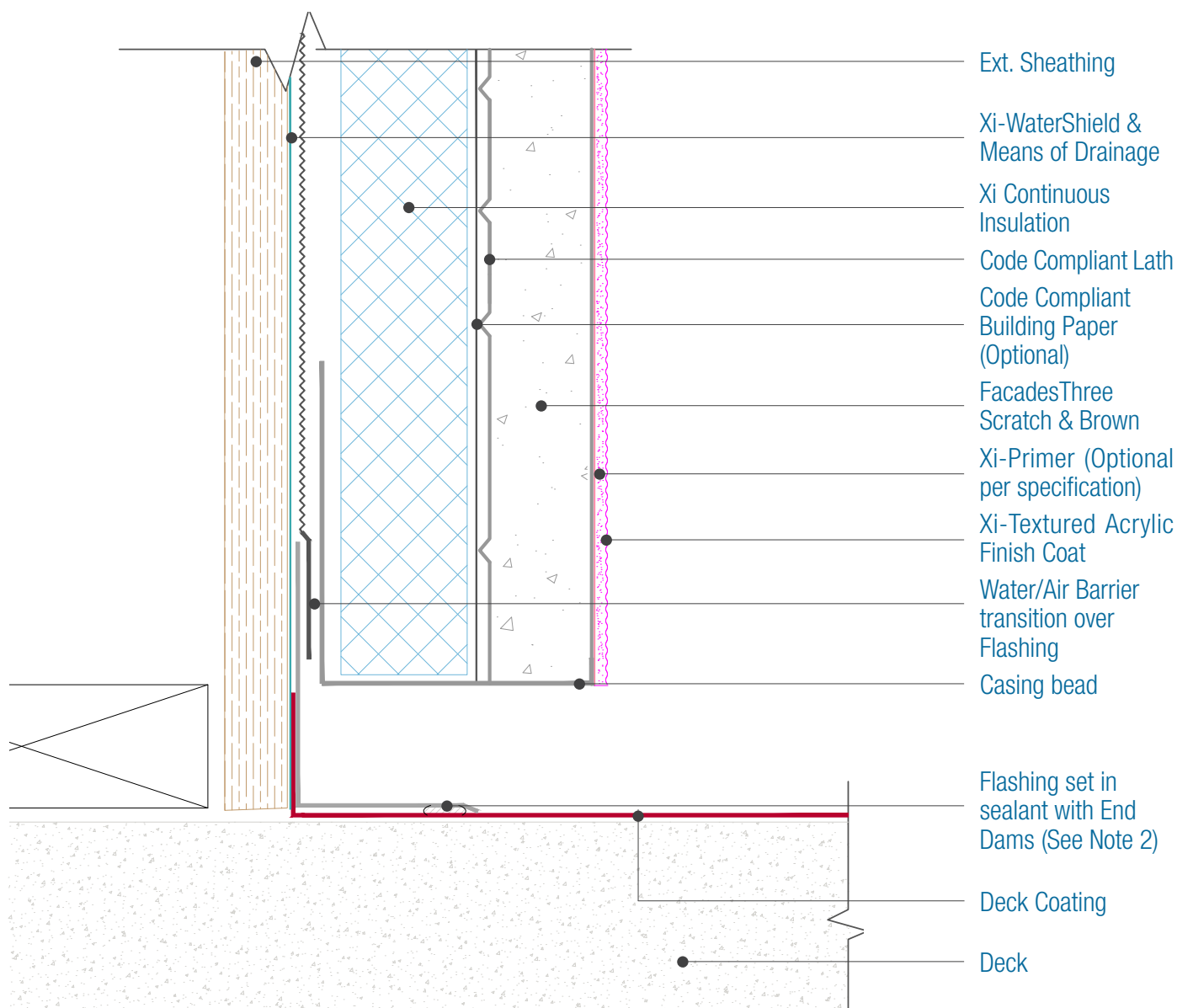
**DISCLAIMER:** FACADESXi details are recommendations that should be used for guidance only. There may be equivalent means of installation that are not shown in FACADESXi assembly details. All FACADESXi products shall be installed in accordance with FACADESXi product datasheets and all applicable building codes and industry standard practices. The design, engineering and final details incorporating any FACADESXi product are the sole responsibility of the project design professional. FACADESXi is not responsible for determining the acceptability and/or applicability of any FACADESXi product or detail for any specific project or condition. FACADESXi disclaims all liability for improper installation, workmanship, or design by a third-party. EXCEPT FOR ANY EXPRESS REPRESENTATIONS AND WARRANTIES BY FACADESXi, ALL IMPLIED WARRANTIES OF ANY KIND, INCLUDING BUT NOT LIMITED TO WARRANTIES OF MERCHANTABILITY OR FITNESS FOR A PARTICULAR PURPOSE OR COMPLIANCE WITH LAWS OR GOVERNMENT RULES OR REGULATIONS APPLICABLE TO THE PROJECT, ARE HEREBY DISCLAIMED. FACADESXi's website should always be consulted for the latest version of any details and/or product information. Contact FACADESXi for any technical assistance.



15262 Capital Port  
San Antonio, TX 78249  
1-800-611-6602  
facadesxi.com

# FacadesThree WaterShield Xi-Series Deck

Date. 06-15-2021 | Detail. F3WSXI.VI.2 v1



## NOTES:

1. FXI WaterShield transition and accessory products and installation can be found in the project specifications, product datasheets and the WaterShield Details.
2. The flashing is not typically installed by the Plastering Contractor. Responsibility should be determined before construction.
3. Flashing must be watertight, and include end dams if applicable. If the flashing is not installed, backer rod and sealant with weeps is required.
4. For full assembly options, materials and placement of materials refer to the specific FACADESXi System specifications.
5. A specific means of drainage plane is required in certain building codes and construction types. Check with your specific code or contact FXI Technical Services for assistance.

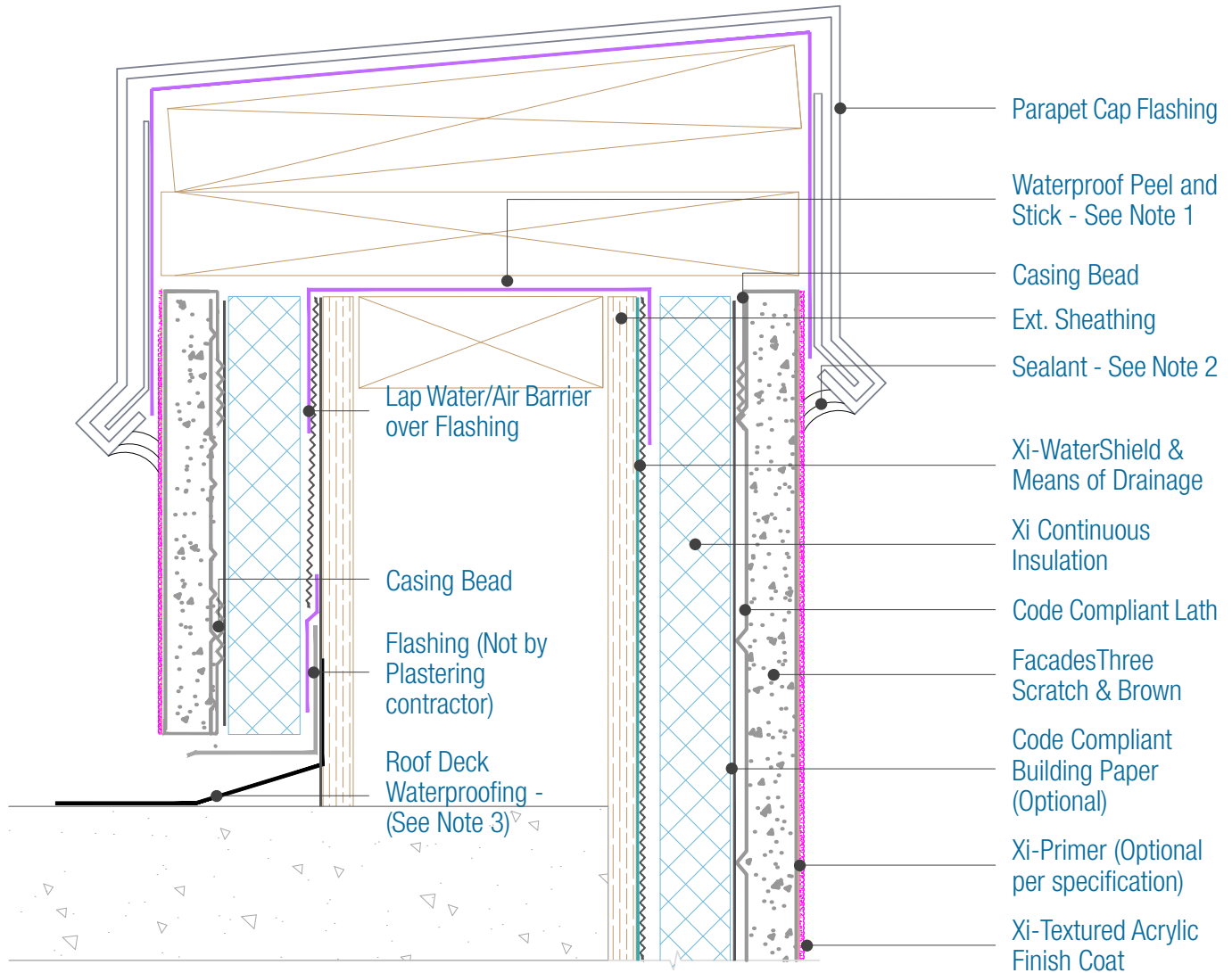
**DISCLAIMER:** FACADESXi details are recommendations that should be used for guidance only. There may be equivalent means of installation that are not shown in FACADESXi assembly details. All FACADESXi products shall be installed in accordance with FACADESXi product datasheets and all applicable building codes and industry standard practices. The design, engineering and final details incorporating any FACADESXi product are the sole responsibility of the project design professional. FACADESXi is not responsible for determining the acceptability and/or applicability of any FACADESXi product or detail for any specific project or condition. FACADESXi disclaims all liability for improper installation, workmanship, or design by a third-party. EXCEPT FOR ANY EXPRESS REPRESENTATIONS AND WARRANTIES BY FACADESXi, ALL IMPLIED WARRANTIES OF ANY KIND, INCLUDING BUT NOT LIMITED TO WARRANTIES OF MERCHANTABILITY OR FITNESS FOR A PARTICULAR PURPOSE OR COMPLIANCE WITH LAWS OR GOVERNMENT RULES OR REGULATIONS APPLICABLE TO THE PROJECT, ARE HEREBY DISCLAIMED. FACADESXi's website should always be consulted for the latest version of any details and/or product information. Contact FACADESXi for any technical assistance.



15262 Capital Port  
San Antonio, TX 78249  
1-800-611-6602  
facadesxi.com

# FacadesThree WaterShield Xi-Series Parapet

Date. 06-15-2021 | Detail. F3WSXI.VI.1 v1



## NOTES:

1. For full assembly options, materials and placement of materials refer to the specific FACADESXI System specifications.
2. Sealant should be omitted if the Parapet assembly must drain at this location.
3. Responsibility of the flashing is not necessarily that of the plastering contractor and should be denoted in the contract documents.
4. A specific means of drainage plane is required in certain building codes and construction types. Check with your specific code or contact FXI Technical Services for assistance.

**DISCLAIMER:** FACADESXI details are recommendations that should be used for guidance only. There may be equivalent means of installation that are not shown in FACADESXI assembly details. All FACADESXI products shall be installed in accordance with FACADESXI product datasheets and all applicable building codes and industry standard practices. The design, engineering and final details incorporating any FACADESXI product are the sole responsibility of the project design professional. FACADESXI is not responsible for determining the acceptability and/or applicability of any FACADESXI product or detail for any specific project or condition. FACADESXI disclaims all liability for improper installation, workmanship, or design by a third-party. EXCEPT FOR ANY EXPRESS REPRESENTATIONS AND WARRANTIES BY FACADESXI, ALL IMPLIED WARRANTIES OF ANY KIND, INCLUDING BUT NOT LIMITED TO WARRANTIES OF MERCHANTABILITY OR FITNESS FOR A PARTICULAR PURPOSE OR COMPLIANCE WITH LAWS OR GOVERNMENT RULES OR REGULATIONS APPLICABLE TO THE PROJECT, ARE HEREBY DISCLAIMED. FACADESXI's website should always be consulted for the latest version of any details and/or product information. Contact FACADESXI for any technical assistance.

**FACADESXi**